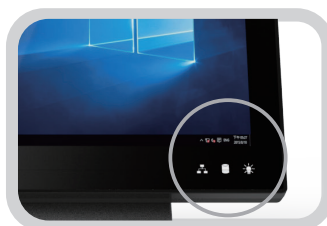
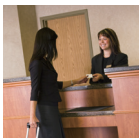


## The Sleek High Performance Bezel-Free POS Terminal

The ADXPOS3 is a highly reliable POS Terminal with the performance of Intel® Celeron® (Bay Trail) processors. Perfect for empowering your business with high performance and sophistication.



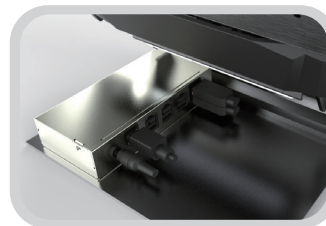
Power, Storage and LAN LED status indicate



15" Bezel-Free PCAP Touch



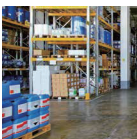
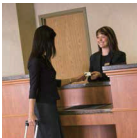
10.1" 2nd Display and VFD Supported



Support 12V / 24V PoweredUSB output

# Specifications (1/2)

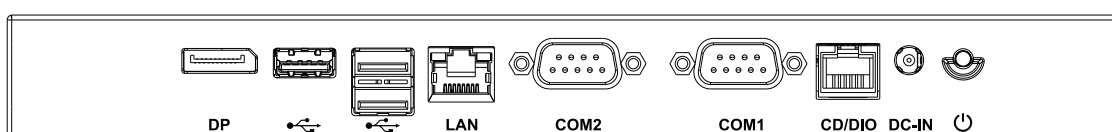
|                    |                         |   |
|--------------------|-------------------------|---|
| Model Name         |                         | ADXPOS3   |
| Main Board         | Main Board Name         | X7CE  |
|                    | CPU                     | Intel® Bay Trail-Mobile/Desktop SoC Processor:<br>Celeron® N2930 (4 cores, up to 2.16 GHz, max TDP 7.5 Watt)<br>Celeron® J1900 (4 cores, up to 2.42 GHz, max TDP 10 Watt) |
|                    | Chipset                 | Intel® HD Graphics  |
|                    | System Memory           | SO-DIMM DDR3L x 1 1067/1333MHz, Max. 8GB  |
|                    | Thermal Solution        | Fanless   |
|                    | BIOS                    | Phoenix uEFI BIOS   |
|                    | OS                      | Windows 7, WES 7, POSReady 7<br>Windows 8, Windows Embedded 8 Standard/Industry Retail<br>WIN 10  |
|                    |                         |   |
| Display            | LCD size                | 15" TFT LCD Panel (LED Backlight)   |
|                    | Brightness              | 250 nits  |
|                    | Resolution              | 1024 x 768  |
|                    | Panel backlight type    | LED   |
|                    | Touch Screen            | P-cap   |
| Storage Device     | Interface               | SATA x 2 (3.0Gb/s)  |
|                    | HDD / SSD               | 2.5" SATA HDD / SSD x 1<br>mSATA slot x 1   |
| I/O Ports          | COM                     | COM 1 : DB9 RS232 x 1 (5V / 12V by S/W selection)<br>COM 2 : DB9 RS232 x 1 (5V / 12V by S/W selection)  |
|                    | USB                     | USB 3.0 x 1<br>USB 2.0 x 2  |
|                    | LAN                     | Gigabit Ethernet by RJ-45 x 1, support Wake on LAN  |
|                    | Cash Drawer             | RJ12 x 1, support 12V / 24V DC cash drawer  |
|                    | Audio                   | 2 Watt Speaker x 2 (Option)   |
|                    | Video                   | DisplayPort x 1   |
|                    | DC-in                   | 19VDC input, 2pins jack x 1   |
|                    | Power Button            | Power button x 1  |
|                    |                         |   |
| Internal Connector | VGA                     | VGA pin-header x 1  |
|                    | COM                     | COM 3: RS232 pin-header x 1 (no power, Option)<br>COM 4: RS232 pin-header x 1 (no power, Option)<br>COM 5: RS232 pin-header x 1 (5V, Option)                              |
|                    | SATA                    | SATA connector (NB type) x 1  |
|                    | 50pin pin-header        | 50 pin-header x 1 (EDP, COM6 (12V,VFD), USB2.0*3, Power Switch and LED)   |
|                    | Audio                   | Pin Header for Speaker x 1  |
|                    | Battery                 | Pin Header x 1  |
|                    | Cash Drawer Power       | Pin header 12V/24V  |
|                    | Power Switch and LED    | Pin Header  |
|                    |                         |   |
| Others             | Expansion Slot          | M.2 2230 E-key slot x 1 (for Wi-Fi module, included USB2.0 signal)<br>Full size mSATA slot x 1 (for mSATA SSD)  |
|                    | Communication           | Wireless LAN module, M.2 2230 E-key (Optional)  |
|                    | Wall mount              | Support VESA Mount  |
|                    | Power Supply            | External adapter, 19V DC input, 65Watt  |
|                    | Colour                  | Black   |
|                    | Material                | Plastic / Aluminium   |
|                    | EMC & Safety Compliance | CE / FCC / VCCI / CB / WEEE / RoHS  |
|                    | Dimension (W x D x H)   | 36 x 18.9 x 29 cm (14.2 x 7.5 x 11.4 inch)  |
|                    | Weight                  | 5.5 kg  |



## Specifications (2/2)

|               |                       |                                |
|---------------|-----------------------|--------------------------------|
| Model Name    | ADXPOS3               |                                |
| Environmental | Operating Temperature | 0 to 50°C                      |
|               | Storage Temperature   | -20~ 60°C                      |
|               | Humidity              | 20% to 85% RH (non condensing) |

## I/O Interface

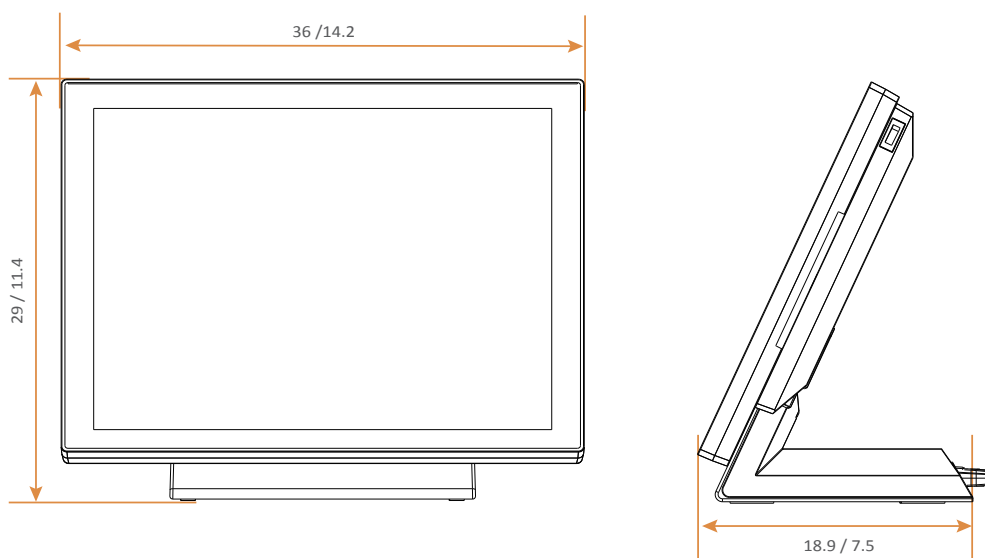


## Ordering information

### Main Unit

| Part No.         | Description  |
|------------------|--|
| ADXPOS3-5B-N2930 | Bay Trail POS Terminal w/ 15" TFT LCD Intel® Celeron® N2930 2.16GHz, Black |
| ADXPOS3-5B-J1900 | Bay Trail POS Terminal w/ 15" TFT LCD Intel® Celeron® J1900 2.42GHz, Black |

## Dimensions (cm / inch)



**Ardax**

**Ardax Tech GmbH**

Am Schiffbeker Berg 6 22111 Hamburg

Tel. +49-40-4665624-0

Fax +49-40-4665624-55

<http://www.ardax-tech.eu>